

TECHNICAL DATA SHEET

PRIMUS PSS8 TRINITY Clinical – Large Size Sterilizers

The PSS8 Trinity sterilizers are designed for all Clinical applications including surgery, central sterile supply. They are pit-mounted, allowing the optional floor carts to roll directly into the chamber. PRIMUS sterilizers are designed, developed and manufactured in the USA according to Quality Management System which are in compliance with ISO 9001:2000, ISO 13485:2003, CMDCAS and FDA's Good Manufacturing Practice for Medical Devices: General (GMP) regulation (21CFR Part 820). Large size sterilizers are one segment of 12 standard clinical sizes manufactured by PRIMUS.



Two 26" x 63" Pit Mounted Units Shown with optional PSS500 Control

STERILIZER DESIGN

The pressure vessel is the heart of any sterilizer. PRIMUS offers simple, straight forward, design. All PRIMUS pressure vessels are constructed of solid stainless steel and are fabricated by PRIMUS in our quality controlled, ASME facility. The interior chamber surface is polished to a mirror finish of $<10\mu$ in. Ra. The brilliant Pri-Mirror[®] reflective chamber finish sets the highest standard for cleanliness and offers easy spill clean-up and resistance to staining and degradation.

PRIMUS rectangular chambers eliminate the wasted space and high utility cost common to old-style cylindrical or elliptical chambers and jackets. This provides savings in operating cost and service.

All large sizes of PRIMUS sterilizers have pneumatically powered horizontal operating doors, designed to be efficient, reliable and inherently safe. To close the door, depress and hold the door button, if button is released door opens. An added safety feature, the doors stop automatically if an obstacle is encountered.

Pit-mounted sterilizers with matching floor loading carts are guided into the chamber by floor tracks which match cart casters. Pass-through models are available

STERILIZER CYCLES

All PRIMUS steam sterilizers include Gravity, Vacuum and Liquid cycle settings. A Test/Vac cycle is provided for utilizing Bowie-Dick[™] tests.

For surgical packs, select one of the vacuum cycles. For the sterilization of liquids in open or vented containers, select a liquids cycle.

PRIMUS offers the PSS8 Trinity Control a Microcomputer Control with color touch screen. Trinity Controls offer simple, versatile, control and is the first choice for both sterilizer users and service technicians.



PRIMUS Sterilizer Company, LLC • 117 South 25th Street • Omaha, NE 68131
Phone (970) 674.1799 • Fax (970) 674-1801 • www.techequipsales.com CO/AZ/NM



PURCHASING SPECIFICATION DATA SHEET

TECHNICAL DATA SHEET

GENERAL *(Options italicized)*

All models shall include Vacuum, Gravity and Liquids cycles. *A Low Temperature Flowing Steam option provides flowing steam at low temperatures for Research laboratories for specific applications.*

VESSEL MATERIAL AND CONSTRUCTION

The sterilizer will have a double-wall design providing for a fully jacketed pressure vessel. The chamber cross section will be rectangular with width and height dimensions to include:

- J - 26" x 63" x 48"
- K - 26" x 63" x 76"
- M - 35" x 57" x 60"

The vessel material will be non-laminated solid stainless steel plate/sheet. The chamber, head-ring and door plate material will be 316L stainless steel with an interior Pri-Mirror® finish of <10µ in. Ra.

DESIGN and MANUFACTURING APPROVALS

The vessel will be designed and constructed to ASME code Section VIII Division I and pressure rated for 45 PSIG and full vacuum. ASME Code Stamp and U-1 form will bear the name of PRIMUS as the specified US manufacturer.

The sterilizer will be manufactured according to Quality Management Systems which are in compliance with ISO 9001:2000, ISO 13485:2003, CMDCAS, FDA and will be UL listed and in conformance to CSA requirements.

DOOR CONSTRUCTION

A pneumatically operated horizontally sliding door will be operable from the touchpad push button. To close door, depress/hold door button. If door button is released while closing, door reverses direction and opens. In the open position, the insulated door will be secured behind a panel preventing the operator from contact with hot surfaces. An interlock will prevent cycle start unless the door is fully closed and secured.

GENERAL CONSTRUCTION

The vessel shall be insulated with 1" semi-rigid high temperature fiberglass board/blanket overlaid with formed aluminum paneling and mounted in a structural steel frame. The frame shall be enamel coated and fitted with adjustable legs on self-centering floor pads. The fascia and side panels will be 16-gauge, type 304 stainless-steel, removable for easy service access.

WATER CONSERVATION

To conserve water and assure effluent exhausted to drain is 140°F or below, PRIMUS provides quench water on demand for exhaust effluent.

EQUIPMENT WARRANTY

Sterilizer pressure vessels manufactured by PRIMUS are warranted against defects in workmanship and materials under normal use and operation for fifteen years where the sterilizer is continually maintained under PRIMUS service contract.

SERVICE and EQUIPMENT ACCESS

Standard service access, when facing the unit will be from left side and top. Wiring shall be laid side-by-side and mechanically secured flat against metal insulations cover. All wiring will be clearly labeled and readily visible for visual tracing. Piping components will be threaded rigid brass and flared copper fittings, positioned with sufficient space for removal and replacement without disassembly of the entire piping assembly. Wiring and piping components will be nonproprietary, industrial grade available through Authorized Service Agencies, local supply house, or direct from PRIMUS.

STEAM SOURCE

Steam will be from an in-house steam source in the quantity and quality specified. *An optional electric boiler may be specified. Contact PRIMUS for specific boiler information*

CONTROLS

A PSS8 microcomputer will offer a selection of six (6) separate programs for the sterilization of wrapped goods, hard-goods, liquids and test cycles. Cycle parameters may be set by the user and are adaptable to a wide range of products. Alarms are annunciated, displayed and printed. Cycle process parameters will be displayed and recorded throughout the cycle. Help screens are available for programming and trouble shooting alarm conditions. Controls are side-mounted with a thermal printer dot-matrix technology, the printer has no moving parts in the print head, and 32 characters per line printing. A copy of the sterilization cycle will be available at the end of the run.



Trinity Control Panel with Thermal Printer

HVAC DATA Heat loss, at ambient of 70° F.

	MODEL	KBTU'S/HR
SINGLE DOOR: Through one wall, at fascia	J	5
	K	5
	M	6
SINGLE DOOR: Through one wall, servicearea	J	11.8
	K	12
	M	9
SINGLE DOOR: Free standing, cabinet total	J	16
	K	16
	M	18

	MODEL	KBTU'S/HR
DOUBLE DOOR: Through one wall, at fascia	J	5
	K	5
	M	6
DOUBLE DOOR: Through one wall, service area	J	16
	K	16
	M	15
DOUBLE DOOR: Through two walls, at each fascia	J	5
	K	5
	M	6
DOUBLE DOOR: Through two walls service area	J	10
	K	10
	M	10

DIMENSIONS, CUBAGE & WEIGHTS

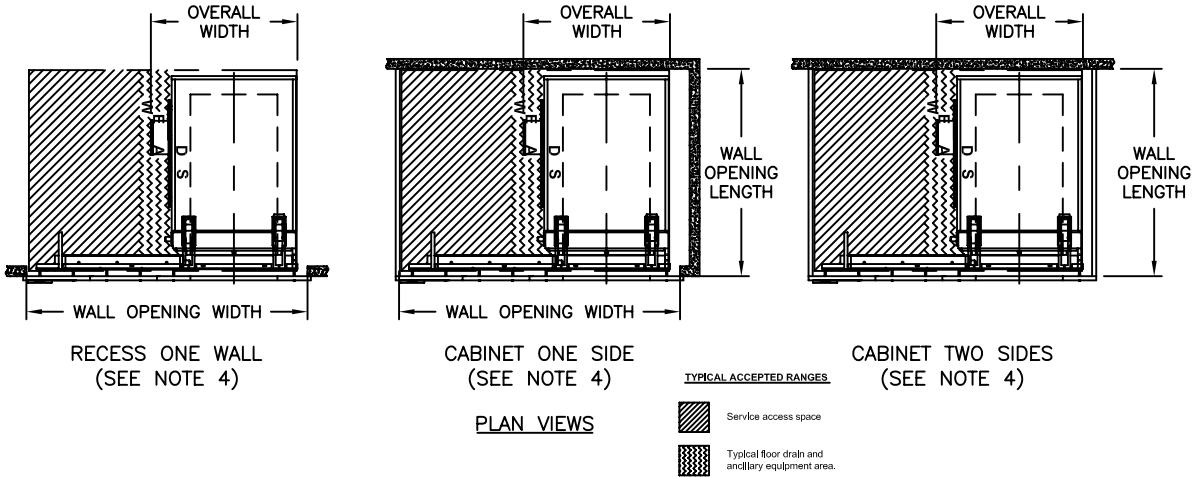
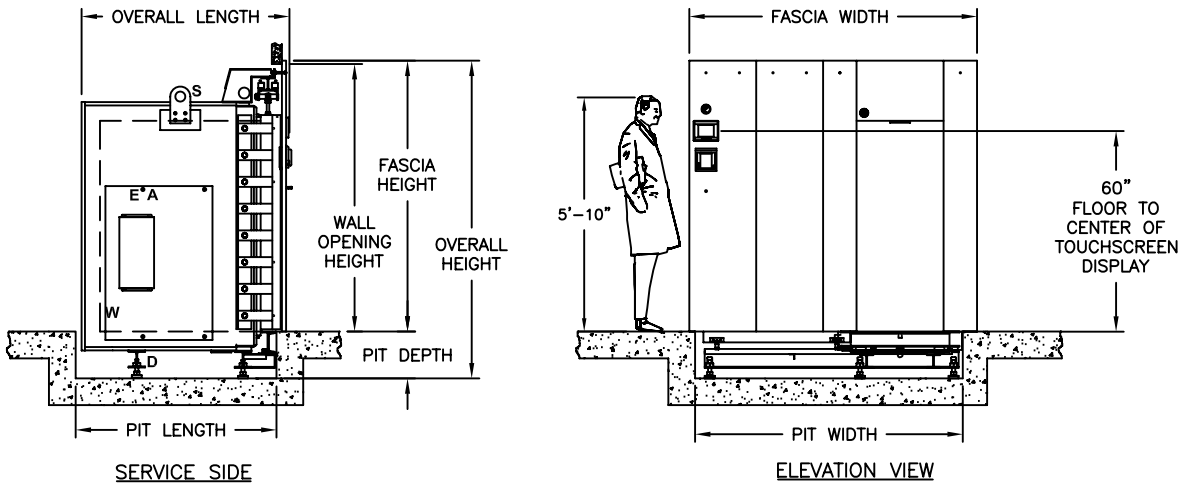
Model Sterilizer Size inches/millimeters	J 26" x 63" x 48" 660.4 x 1600.2 x 1219.2	K 26" x 63" x 76" 660.4 x 1600.2 x 1930.4	M 35" x 57" x 60" 889 x 1447.8 x 1524
Shipping Dimensions, Single Door ¹	58 x 89.5 x 59.5 1473.2 x 2273.3 x 1511.3	58 x 89.5 x 87.5 1473.2 x 2273.3 x 2222.5	68.63 x 82.5 x 71.75 1743 x 2089.2 x 1822.5
Shipping Dimensions, Double Door ¹	58 x 89.5 x 60 1473.2 x 2273.3 x 1524	58 x 89.5 x 88 1473.2 x 2273.3 x 2235.2	68.63 x 82.5 x 72.75 1743 x 2089.2 x 1847.9
Overall Width Dimensions	79 / 2006.6	79 / 2006.6	105 / 2667
Knockdown Width Dimensions ²	40.5 / 1028.7	40.5 / 1028.7	48.31 / 1277.1
Weight, Single Door	CONTACT PRIMUS FOR WEIGHTS		
Weight, Double Door			
Crated Weight (Additional)	VAN DELIVERY ONLY		
Crated Dimensions	42 x 92 x 61 1066.8 x 2336.8 x 1549.4	42 x 92 x 89 1066.8 x 2336.8 x 2260.6	81 x 87 x 86 2057.4 x 2209.8 x 2184.4
Crated Cube	137 cu ft / 4m ³	200 cu ft / 6m ³	350 cu ft / 9.9m ³
Loading Equipment (Floor Carts)	152 lb/ 69 kg	240 lb/ 109kg	380 lbs / 172 kg
Boiler	785 lb/ 356 kg	790 lb/ 359kg	790 lbs / 358 kg

1. Door beams on all units may be split for shipping purposes.
2. Shipping dimensions are measured to the edge of the heat exchanger and include plumbing on, split beams removed, where applicable, front stainless panel and printer removed.



PRIMUS PSS8 Clinical - Large Sterilizers

SINGLE DOOR



VOLUME/DIMENSIONS CHART

Refer to General Arrangement drawings for details and final connection point to utility services.
(S-Steam, W-Water, D-Drain, E-Electrical, A-Air)

MODEL	J	K	M
Chamber Size (w x h x l) inches/millimeters	26 x 63 x 48 660 x 1600 x 1219	26 x 63 x 76 660 x 1600 x 1930	35 x 57 x 60 889 x 1448 x 1524
Chamber Capacity	45.5 ft³ / 1.29 m³	72.0 ft³ / 2.04 m³	69.3 ft³ / 1.96 m³
Overall Width ³	40.25 / 1022.35	40.25 / 1022.35	52.31 / 1329
Overall Height ¹	109.00 / 2768.6	109.00 / 2768.6	96.00 / 2438
Overall Length (SD) ²	64.00 / 1625.6	92.00 / 2336.8	75.50 / 1918
Wall Opening Width	84.00 / 2133.6	84.00 / 2133.6	105.00 / 2667
Wall Opening Height	94.00 / 2387.6	94.00 / 2387.6	83.00 / 2108
Wall Opening Length ³	62.25 / 1581.15	90.25 / 2292.35	75.50 / 1918
Fascia Width	86.00 / 2184.4	86.00 / 2184.4	107.00 / 2718
Fascia Height	95.00 / 2413.0	95.00 / 2413.0	84.00 / 2134

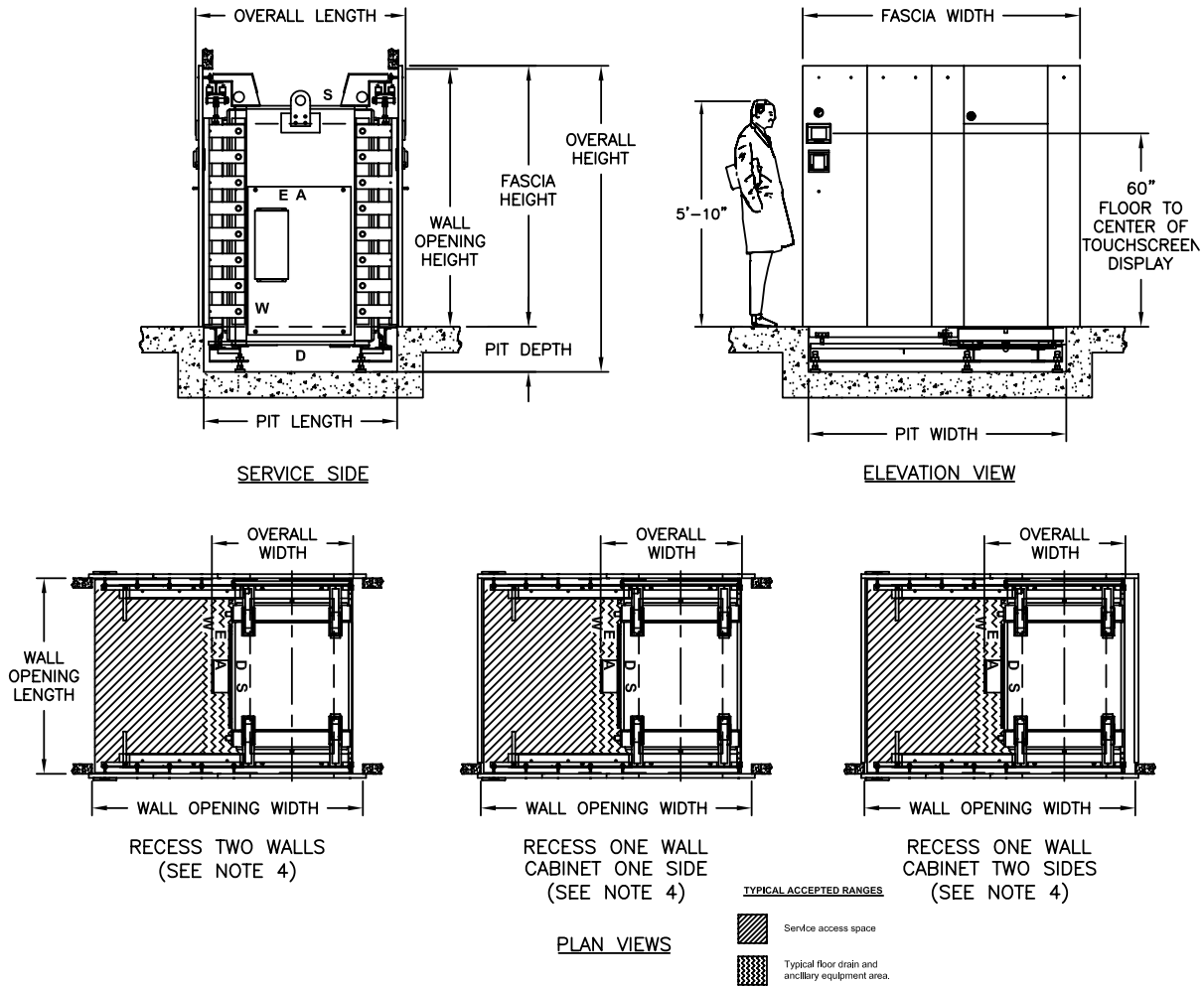
- Fascia extends 1" beyond wall opening on each side overlapping the wall and sealing the opening.
- Allow minimum 2" clearance at rear of recessed unit only. Cabinet side models have rear clearance built in.
- Contact PRIMUS for alternative wall opening.
- Standard left side service/equipment access show. Optional right side access is available.



PRIMUS PSS8 Clinical - Large Sterilizers

DOUBLE DOOR

TECHNICAL DATA SHEET



VOLUME/DIMENSIONS CHART

Refer to General Arrangement drawings for details and final connection point to utility services.
(S-Steam, W-Water, D-Drain, E-Electrical, A-Air)

MODEL	J	K	M
Chamber Size (w x h x l) inches/millimeters	26 x 63 x 48 660 x 1600 x 1219	26 x 63 x 76 660 x 1600 x 1930	35 x 57 x 60 889 x 1448 x 1524
Chamber Capacity	45.5 ft³ / 1.29 m³	72.0 ft³ / 2.04 m³	69.3 ft³ / 1.96 m³
Overall Width ²	40.25 / 1022.35	40.25 / 1022.35	52.31 / 1329
Overall Height ¹	109.00 / 2768.6	109.00 / 2768.6	96.00 / 2438
Overall Length (DD)	70.13 / 1781.18	98.13 / 2492.5	79.75 / 2025.7
Wall Opening Width ²	84.00 / 2133.6	84.00 / 2133.6	105.00 / 2667
Wall Opening Height	94.00 / 2362.2	94.00 / 2387.6	83.00 / 2108
Wall Opening Length	62.44 / 1585.91	90.44 / 2297.11	74.50 / 1892
Fascia Width	86.00 / 2184.4	86.00 / 2184.4	107.00 / 2718
Fascia Height	95.00 / 2413.0	95.00 / 2413.0	84.00 / 2134

1. Fascia extends 1" beyond wall opening on each side overlapping the wall and sealing the opening.
2. Contact PRIMUS for alternative wall opening.
3. Standard left side service/equipment access show. Optional right side access is available.

